

30TH ANNIVERSARY

SIERRA-FOOTHILL



· CONSERVANCY ·

2024-2025 Impact Report

Join us in celebrating SFC's 30th Anniversary and the many supporters, volunteers, landowners, and partners who have helped weave the tapestry of conservation in this region for three dynamic decades. Because of your commitment, SFC has successfully conserved over 68,000 acres of natural lands, more than doubling our acres-conserved in the last decade alone!

OUR PROGRAMS

- Land Conservation
- Rangeland Management
- Land Stewardship
- Community Engagement
- Development

2,677.55 ACRES CONSERVED IN 2025

1,210 acres Wander N Ranch

896 acres Henness Ridge Partnership Protection

571 acres Ben Hur Ranch

0.55 acres Mariposa Creek Parkway Trail Easement
Connecting 1.11 miles of publicly accessible trails!

68,151 TOTAL ACRES CONSERVED

6.3 Miles of Creeks, Streams, and Rivers

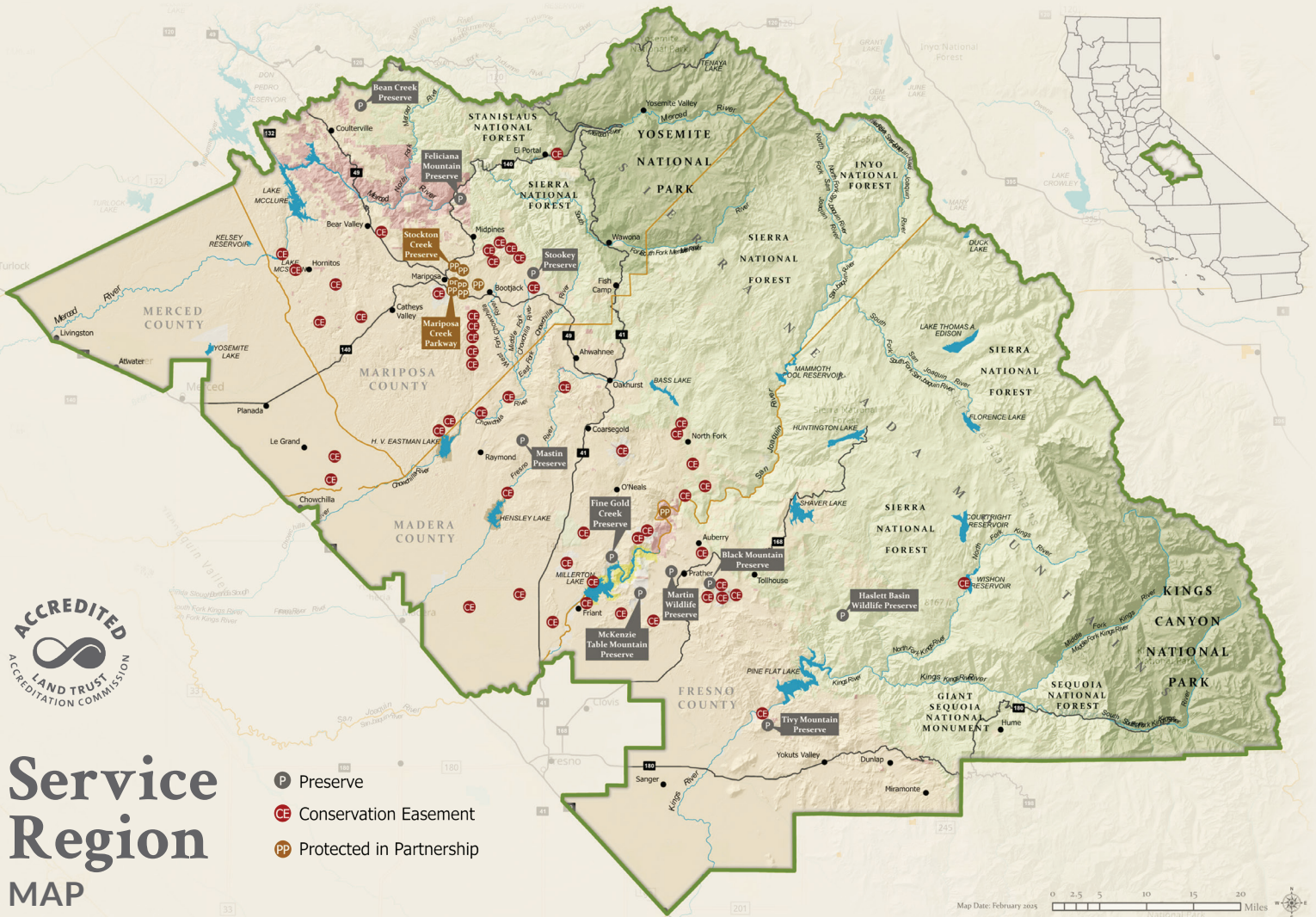
316 Acres of Mixed Pine Forests

1,311 Acres of Oak Woodland

3 New Funding Partners

421 Acres of Grassland

With your help we can save over **2,700 acres** in the coming year!



Service Region MAP

OUR MISSION

The grasslands, foothills, and forests between Yosemite and Kings Canyon National Parks provide land for farms and ranches, a home for native plants and wildlife, and a source of clean water.

Sierra Foothill Conservancy honors our natural and cultural heritage by protecting these resources and ensuring that present and future generations will continue to experience and enjoy the land in this region.

OUR VISION

From the snow-capped Sierra to the Central Valley floor, expansive landscapes, important habitats, and clean water resources are conserved and managed to ensure continuing public benefits. Sierra Foothill Conservancy supports a thriving land-based economy while promoting a conservation ethic that spans generations.

BOARD

PAUL BEARE
President

MARGOT CEGIELSKI

MARGARITA KING

JEAN LINDER

JIM MARSHALL,
Treasurer

RODNEY OLSEN

SUE OVERSTREET,
Secretary

CRAIG POOLE,
Vice-President

JEFF SINGLE

STAFF

LEXI BALLINGER
*Projects & Grants
Manager*

HEATHER BROMBERG
Program Assistant

ALLYSON BROOKS
*Community
Engagement Manager*

BRIDGET FITHIAN
Executive Director

NANCY FLUHARTY
Development Director

BILLY FREEMAN
Rangeland Manager

MARY LINN
*Conservation
Project Manager*

JUNE MCCRORY
Program Associate

LAUREN MILLER
Conservation Director

GARY MILTIMORE
Stewardship Manager

ANGIE SBERNA
Finance Manager

JESSICA THOMPSON
Operations Director

CHRIS VELEZ
Land Steward



Financials

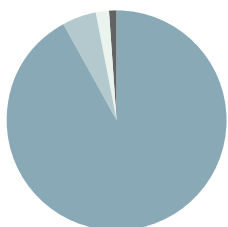
STATEMENT OF ACTIVITIES AS OF JUNE 30, 2024 (AUDITED)

Change in Net Assets	\$3,411,232
Net Assets, Beginning of Year	\$32,276,362
Net Assets, End of Year	\$35,687,594

Cost & Expenses	
Program Services	\$7,629,317
Fundraising	\$177,761
General & Administrative	\$382,488
Sierra Lands Beef, LLC	\$61,735
Total Expenses	\$8,251,301

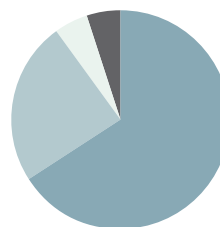
Revenue & Support	
Grants	\$574,912
Contributions & Membership Dues*	\$7,755,457
Program Revenue	\$531,268
Investment Income & Other Income	\$2,800,896
Total Revenue & Support	\$11,662,533

*Includes values of lands and endowments.



Cost & Expenses

- 1% Sierra Lands Beef, LLC
- 2% Fundraising
- 5% General & Administrative
- 92% Program Services



Revenue & Support

- 5% Program Revenue
- 5% Grants
- 24% Investment Income & Other Income
- 66% Contributions & Membership Dues